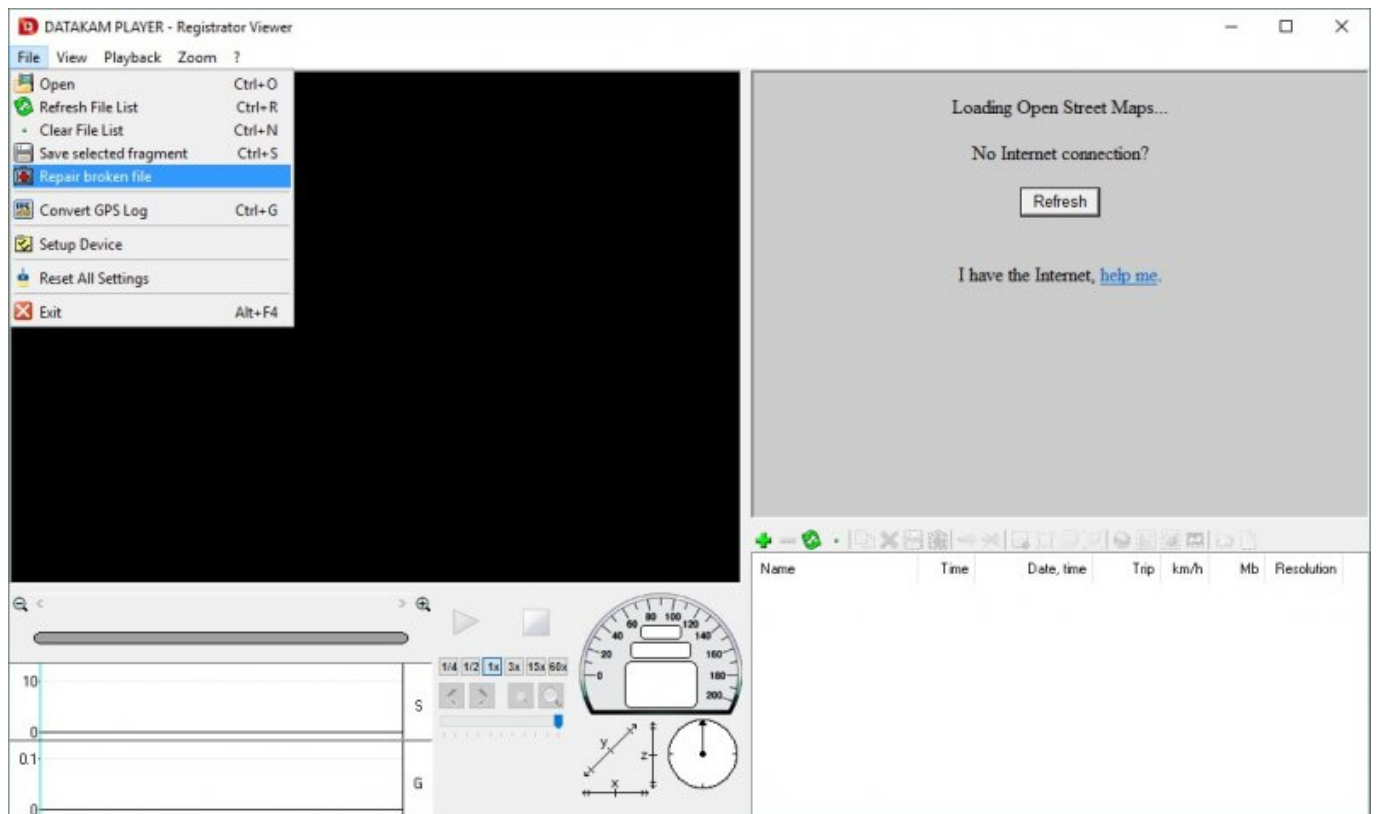




[Dash Cam Registrator Viewer](#)



[Dash Cam Registrator Viewer](#)



Download

I was already hardwiring to the dash fuse box so just as easy for me to do it this way as go over the headliner.

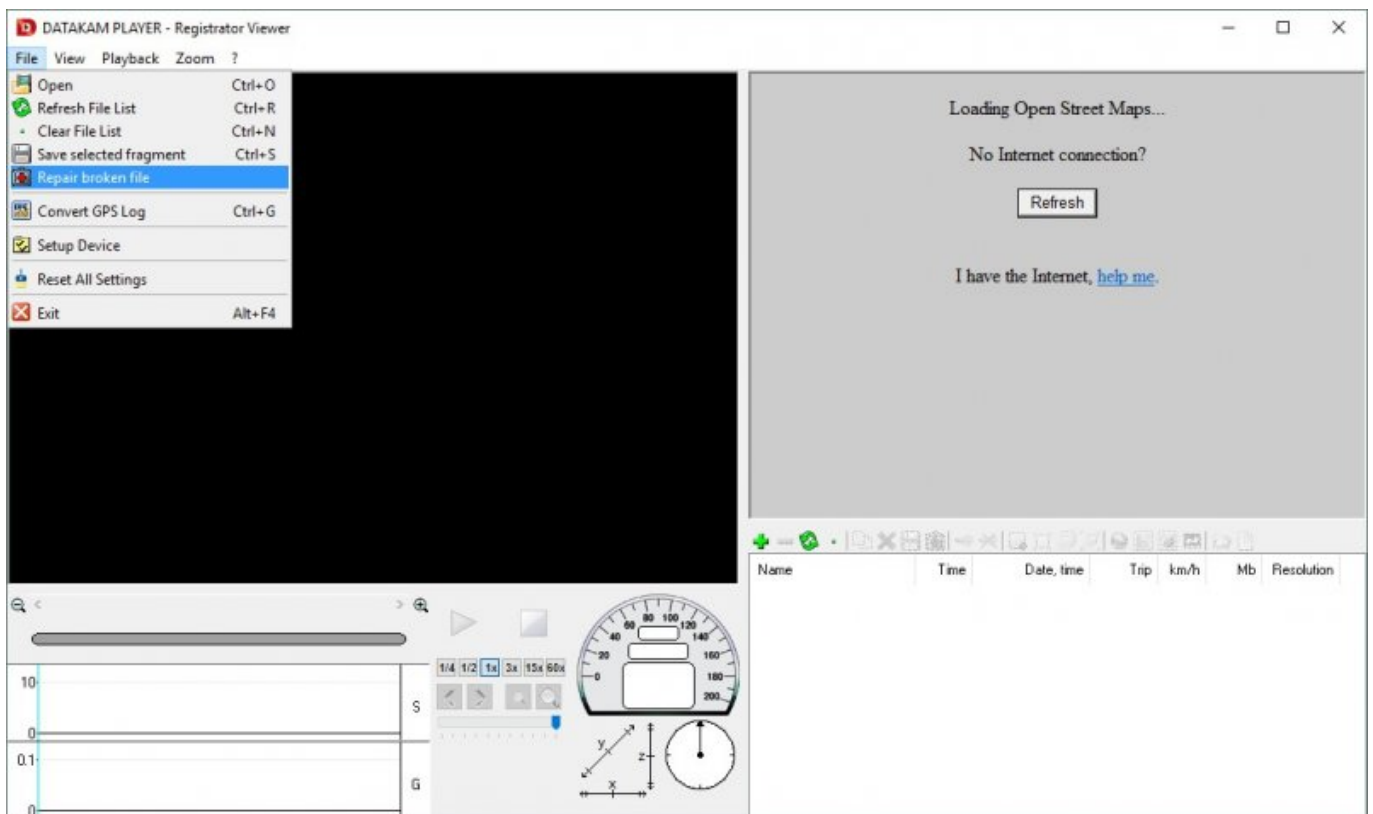
[1. registrator viewer dash cam](#)

I now have it on a dedicated 5v3a circuit so it doesn't have that issue as far as I've seen.

registrator viewer dash cam

registrator viewer dash cam [Manual For Linhof Technorama 612 Pc](#)

I had to make sure my phone wasn't plugged in when I started the car. Once the camera was fully on I could plug it in without any issues.. Dash Cam Registrator Viewer Drivers Side Wire I merely went down the C pillar, forward along the drivers side wire channel (thresholds just pop up), and up the A pillar.. The stepdown box is Velcroed to the headliner where it leans upwards and forward.. I unplug the mini usb for 10 seconds, plug it back in and it's back to normal. If I turned on the car with both the phone and the camera plugged in the juice wouldn't be enough for the camera to fully start up. [Network Monitors For Mac](#)



[Gateway D136 Service Manual download free software](#)

[Free Tag Editor For Mac Os X](#)

Never say never of course, but I'll wait for it to be a problem before I solve it.. I was afraid a rear cam on the back of the cab might not get a good view of cars behind me (like if I was rear ended, whether or not you can make out a license plate). [D1380 G7 Nic Drivers](#)

[تحميل برنامج لتشغيل الالعاب على الفيس بوك تحسيس](#)

Parking break bypass aftermarket headunit Need amp setting help Dash Cam Registrator Viewer Drivers Side WireDash Cam Registrator Viewer Install Without DamagingFrom here it runs through a grommet in the firewall to the engine compartment and is then wired to a relayed fuse in my custom fuse box.. A119 has decent quality video, allows up to 1440p30, or 1080p60 Also a parking mode using motion detection similar to the blackvue and thinkware.. Dash Cam Registrator Viewer Install Without DamagingAny help would be appreciated as Im thinking of installing the Thinkware 770 front and rear facing cameras but would like to do a clean looking install without damaging the trim and headliner.. I soldered a decapitated mini-USB cable to the 5v side of the reducer and of course the mirror connector was soldered to its 12V side.. I have a topper on my truck, wired the rear cam through the firewall below the passenger seat, and used some plastic tubing to protect it.. The pins just push into the negative and positive mirror connector It was an easy task to run the wires in the windshield wire cover after I took the mirror off its bracket.. I could totally take pictures one of these days, but Im not opening up the panels again. e828bfe731 [Adobe X](#)
[Download Windows 10](#)

e828bfe731

[Hard Drive For Mac Pro](#)